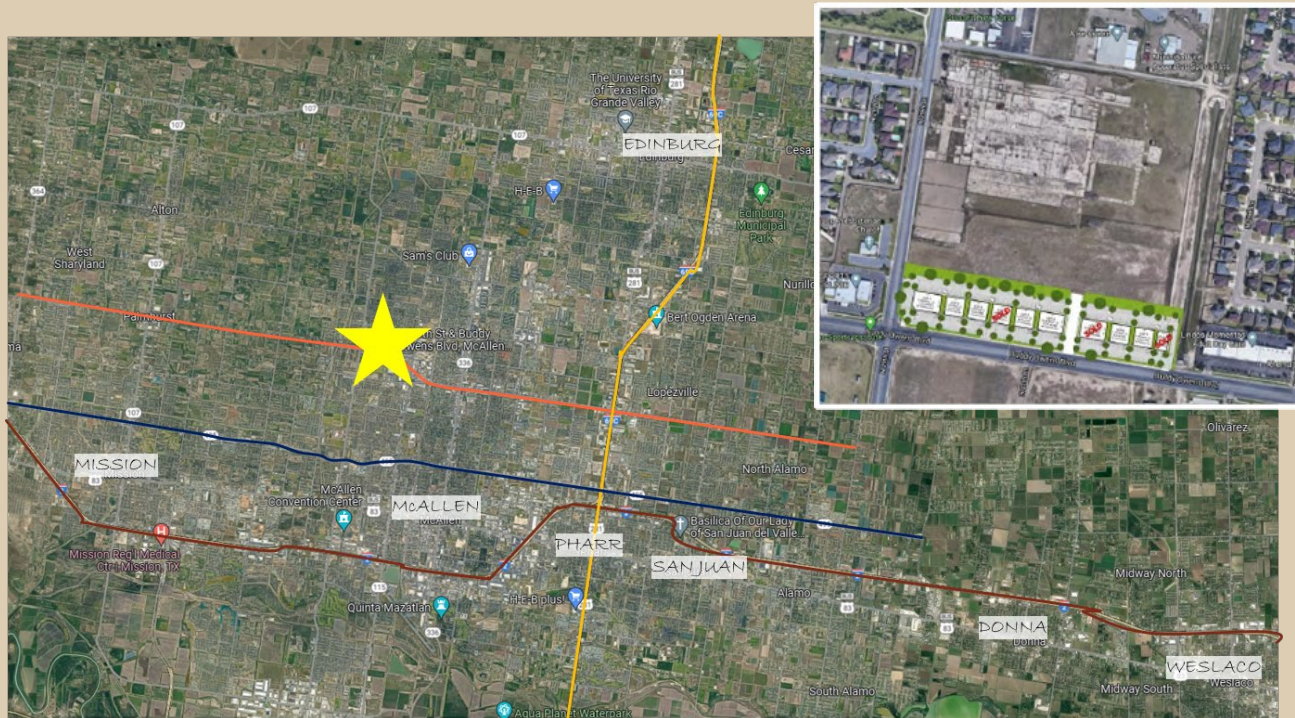


REYNOLDS ESTATES

Buddy Owens @ N. 29th Street, McAllen, Texas 78504



- Ready to Build commercial lots in rapidly growing west central McAllen.
- Fully improved lots with utilities, drainage, curbs, signage and concrete parking lot.
- Ideal location near residential communities, shopping, schools and eating places.
- Perfect for professional and service-oriented businesses.



CBG
REAL ESTATE
GROW WITH US

Reuben Bar Yadin
Reuben@cbgcre.com • (210) 424-8000

Greg Vasquez
GVasquez@cbgcre.com • (210) 424-8000

REYNOLDS ESTATES

Buddy Owens @ N. 29th Street, McAllen, Texas 78504



CBG
REAL ESTATE
GROW WITH US



Demographic Highlights

	1 Mile	3 Miles	5 Miles
Population	15,000	104,000	226,000
Average Household Income	\$92,000	\$97,000	\$90,000
Daytime Employees	5,000	41,000	96,000
Property Size:	+- 9.55 acres		
Lat/Long	26.25322 -98.24686		
Traffic Counts (VPD)	18,000 – Buddy Owens 8,000 – N. 29 th St.		



REYNOLDS ESTATES

Buddy Owens @ N. 29th Street, McAllen, Texas 78504

Lot#	Size	Price PSF	Lot Features	Lot#	Size	Price PSF	Lot Features
1	48,697.30sf (1.12 acres)	\$20.00	Hard Corner w/62 parking max & 9,328 sf building site	6	48,697.30sf (1.12 acres)	\$18.00	End-Cap w/46 parking max & 8,400 sf building site
2	26,999.50sf (0.62 acres)	\$16.00	Interior Lot w/34 parking max & 6,400 sf building site	7	26,999.50sf (0.62 acres)	SOLD	End-Cap w/46 parking max & 8,537 sf building site
3	26,999.62sf (0.62 acres)	\$16.00	Interior Lot w/34 parking max & 6,400 sf building site	8	26,999.62sf (0.62 acres)	\$16.00	Interior Lot w/38 parking max & 6,400 sf building site
4	26,999.73sf (0.62 acres)	SOLD	Interior Lot w/34 parking max & 6,400 sf building site	9	26,999.73sf (0.62 acres)	\$16.00	Interior Lot w/38 parking max & 6,400 sf building site
5	27,000.00sf (0.77 acres)	SOLD	Interior Lot w/36 parking max & 6,400 sf building site	10	27,000.00sf (0.77 acres)		Alley Lot w/19 parking max & 4,040 sf building site



REYNOLDS ESTATES

Buddy Owens @ N. 29th Street, McAllen, Texas 78504



CBG
REAL ESTATE
GROW WITH US

